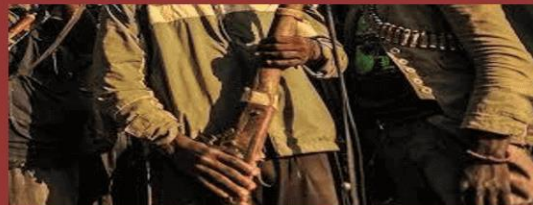


Bevalhabism: A Theory of Personal Growth



Resurgence of Banditry and Insecurity in Nigeria: Way Forward



African Shrines as Channels of Religious Communication in Traditional Religion



Language, Technology and Democratic Culture: A Sociological Analysis

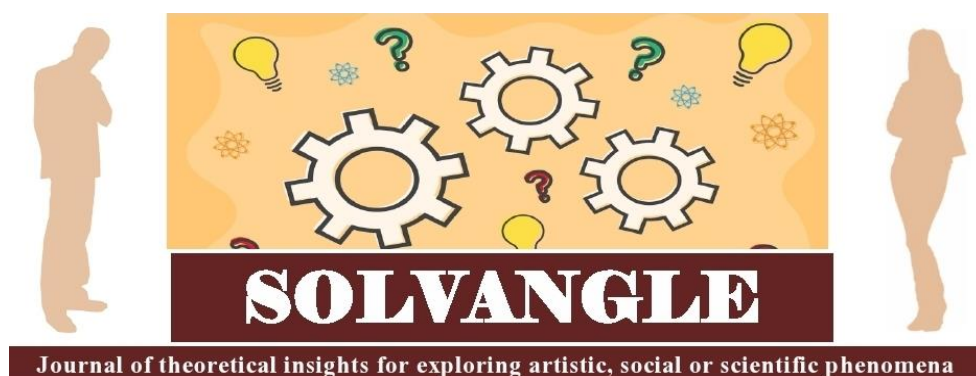


Harnessing traditional healers' role in strengthening Africa's public health response: A case study of Mpox outbreak



SOLVANGLE (Journal of Theoretical Insights), Vol. 1, No, 2, 2025

Website: <https://klamidas.com/solvangle/>



Volume 1, Number 2, December 2025

Published by

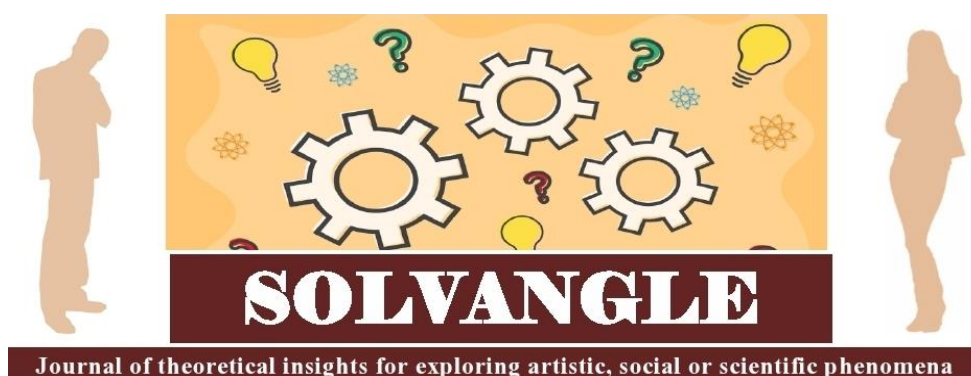
The Division of General Studies
Chukwuemeka Odumegwu Ojukwu University,
Anambra State, Nigeria

in partnership with

Klamidas Communications Ltd
42 Ajose Adeogun Street, Utako District, Abuja
Tel: (+234) 07011831125
Website: <https://klamidas.com/solvangle>
Email: solvangle@klamidas.com

© SOLVANGLE 2025





Editorial Board

Editor-in-Chief

Duve Nakolisa

Editors

Prof. Innocent Chijindu Ngangah

Francis Chuks Madukasi, PhD

Members of Editorial Advisory Board

Prof. Federico G. Settler	University of KwaZulu-Natal, South Africa
Prof. Maduabuchi Dukor	Nnamdi Azikiwe University, Awka, Nigeria
Prof. Sarojini Nadar	University of KwaZulu-Natal, South Africa
Prof. Roderick Hewitt	University of KwaZulu-Natal, South Africa
Prof. Jacob K. Ayantayo	University of Ibadan, Ibadan, Nigeria
Prof. Chika Moore	Nnamdi Azikiwe University, Awka, Nigeria
Prof. E. Nwigwe	University of Port-Harcourt, Nigeria
Prof. Jude E. Madu	Chukwuemeka Odumegwu Ojukwu University, Nigeria
Prof. Uduma Oji Uduma	National Open University, Abakiliki, Nigeria
Prof. O.B.C.Nwankwo	Chukwuemeka Odumegwu Ojukwu University, Nigeria
Dr. Nneka Ifeoma Okafor	University of Nigeria, Nsukka, Nigeria
Dr. Roseline Uzeh	University of Lagos, Lagos, Nigeria

About SOLVANGLE

SOLVANGLE is a multidisciplinary open-access journal of theoretical insights published by the Division of General Studies, Chukwuemeka Odumegwu Ojukwu University (COOU) and Klamidas.com. It is dedicated to research papers that offer profound insight into human, cultural, social, scientific or technological phenomena. It is a journal for scholars whose research upshots or ingenious postulations grasp or explain the inner structure, operational law or logic of a phenomenon, thereby enabling us to understand its complexity while offering a generally-applicable perspective or approach to dealing with issues associated with it. If you have a research output or book chapter that offers an academic insight fit for use as theoretical framework by other researchers, you can get it published here.

*Email your paper to **solvangle@klamidas.com**.



Table of Contents

Bevalhabism: A Theory of Personal Growth

Duve Nakolisa 7-36

Resurgence of Banditry and Insecurity in Nigeria: Way Forward

Olayinka Babatunde Adebogun, Livinus Nwaughu, Banwo Ireunmi & Nathaniel Ehikioya Eboseremen 37-49

African Shrines as Channels of Religious Communication in Traditional Religion

Francis Chuks Madukasi 50-62

Language, Technology and Democratic Culture:
A Sociological Analysis

Bukar Usman

63-85

Harnessing traditional healers' role in
strengthening Africa's public health response:
A case study of Mpox outbreak

Augustus Osborne, Umaru Sesay, Gebrekrstos
Negash Gebru, & Peter Bai James

86-101